



Fisheries-related activities in seamounts of the Madeira-Tore and Great Meteor

A. Campos ¹, P. Lopes ¹, P. Fonseca ¹, I. Figueiredo ¹, G. Araújo ¹, T. Morato ², G. Taranto ², N. Gouveia ³, J. Delgado ³, L. Gouveia ³, A. Amorim ³, V. Henriques ¹, T. Drago ¹, A. dos Santos ¹



Direção Regional dos Assuntos do Mar



¹ IPMA; ² IMAR; ³ ARDITI



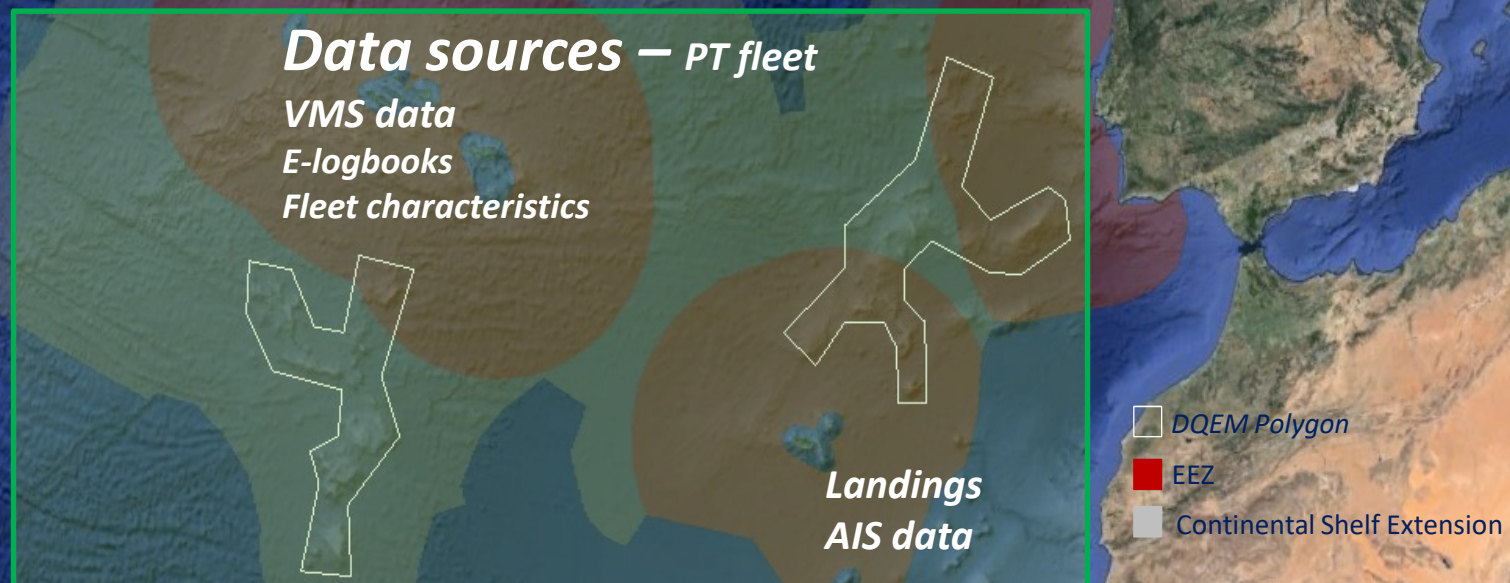
28th of April, 2017

WP4 – Anthropogenic pressures and impacts

- *Compilation and analysis of existing data on anthropogenic activities*
- *Estimation of anthropogenic pressures*
- *Estimation of fisheries catch and bycatch in offshore seamounts*
- *Impacts of bottom fishing on VMEs and litter distribution in offshore seamounts*

Main objectives

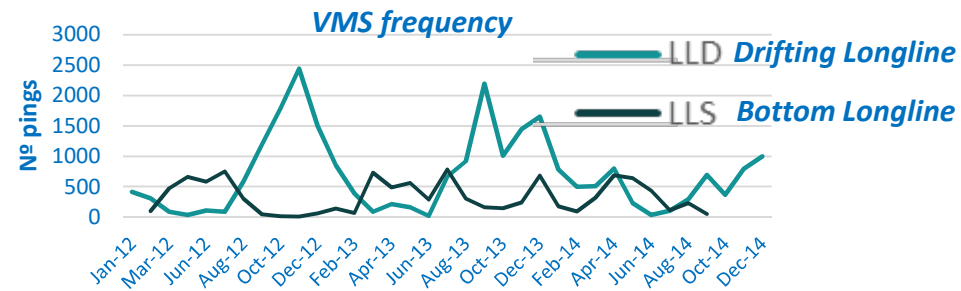
To increase knowledge on MSFD Descriptors D6 (Seafloor integrity) and D3 (Commercial species)



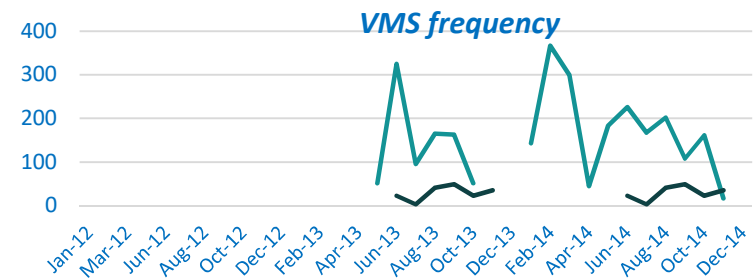
First results

Estimation of fishing intensity - VMS and e-logbook data analysis Portuguese fleet 2012-2014

Madeira-Tore



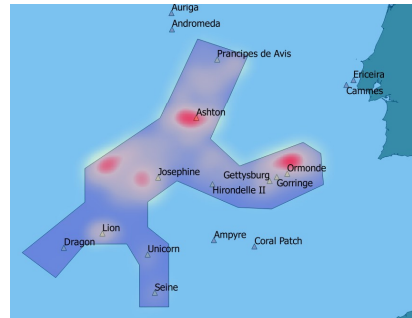
Great Meteor



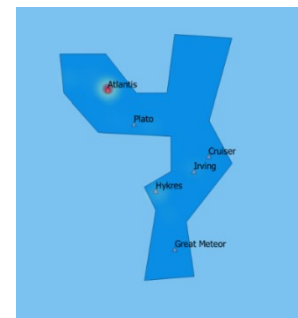
LLS



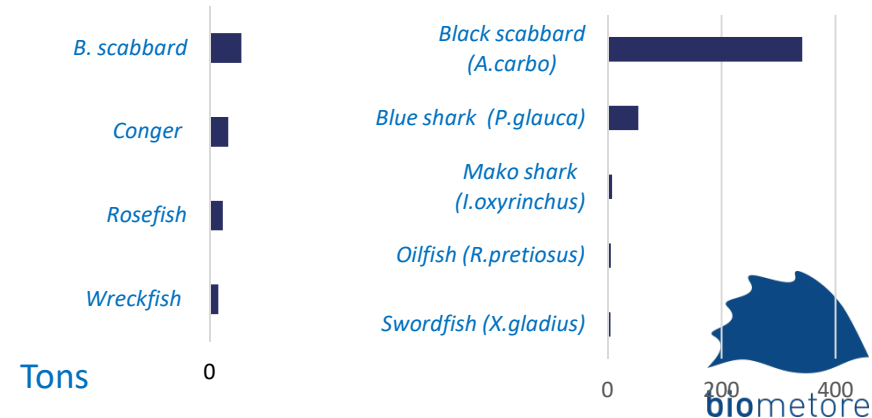
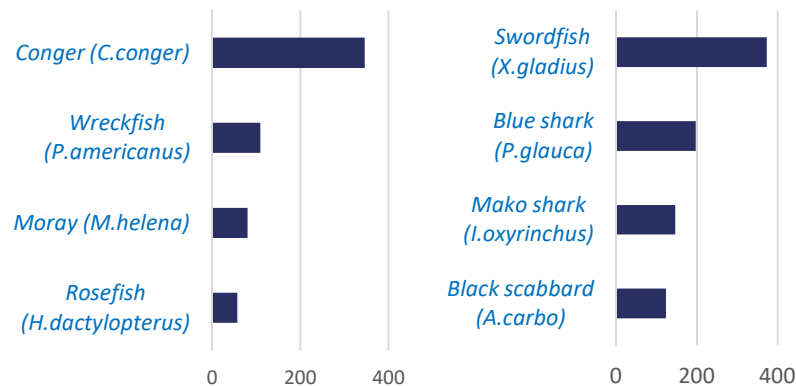
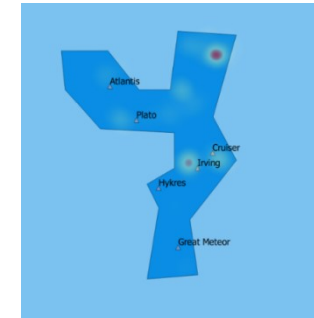
LLD



LLS



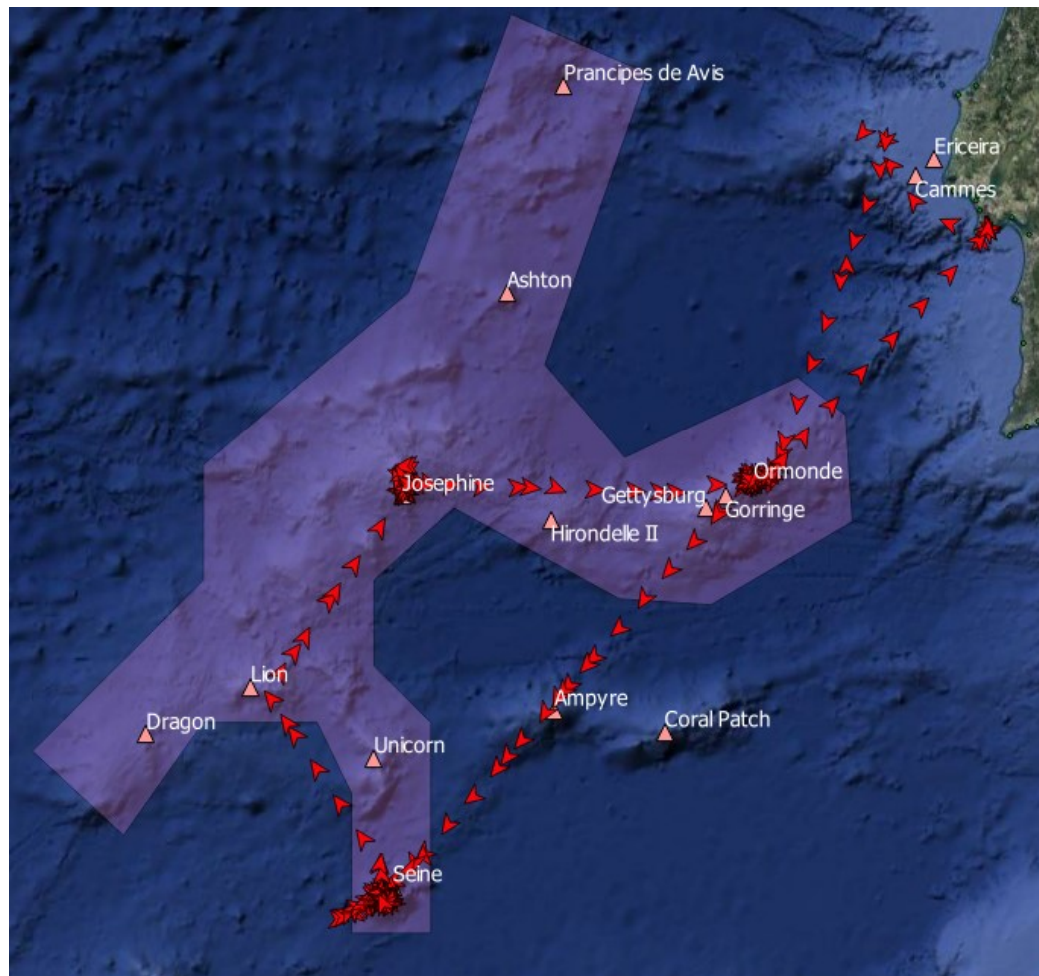
LLD





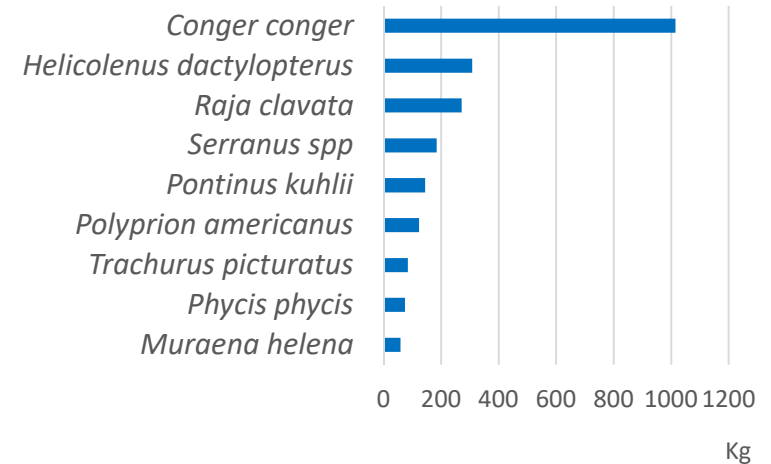
28th of April, 2017

Spatial coverage of a fishing trip for a bottom longliner

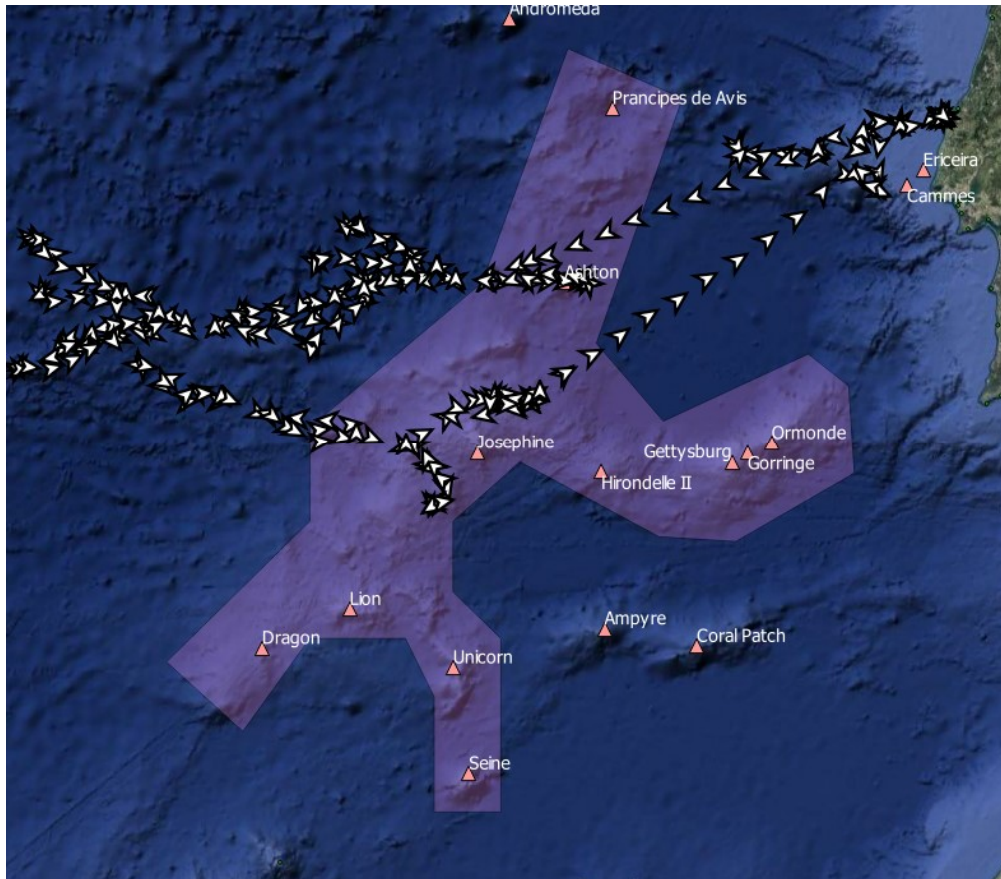


Trip duration: 19 days

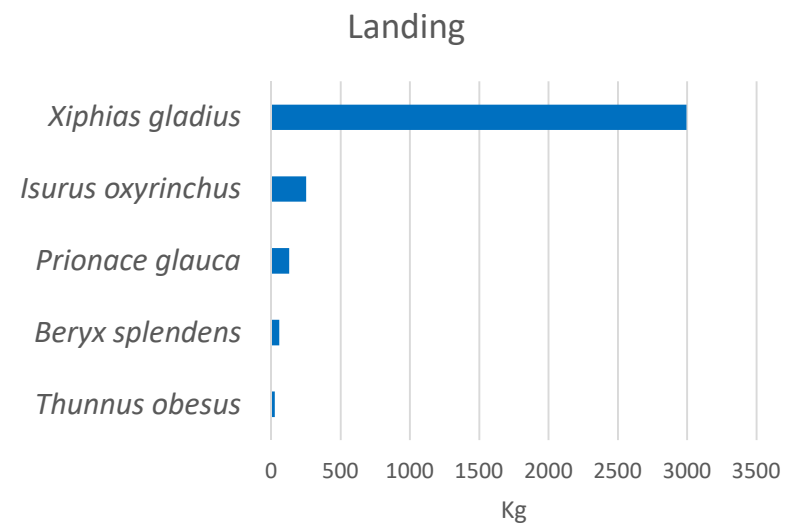
Landing



Spatial coverage of fishing trip for a drift longliner

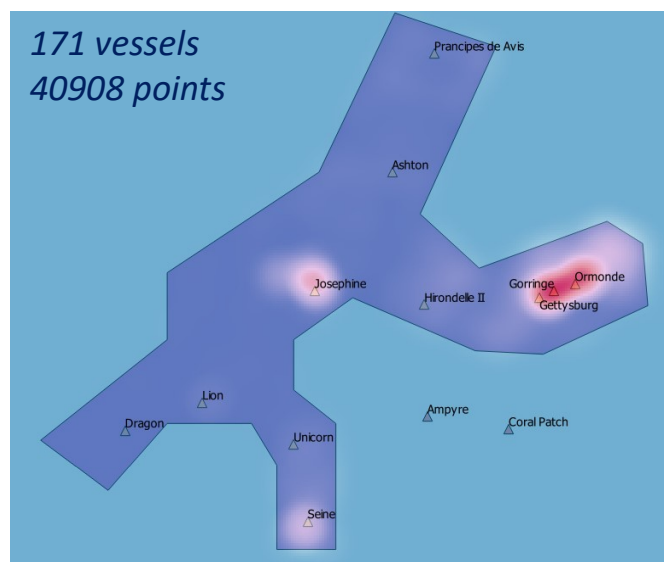


Trip duration: 30 days



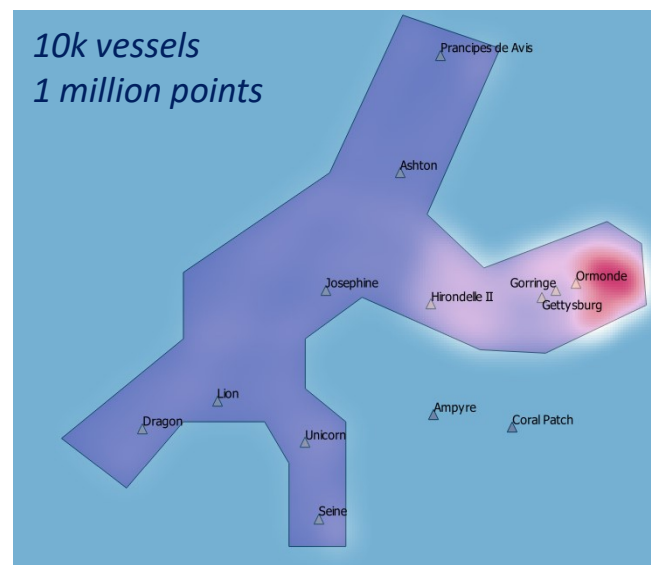
AIS data – characterizing vessels activity (2012-2014)

Fishing fleet – EU and foreign vessels



Country	Nº vessels	Fishing gear	LoA (avg)
Spain	77	LLD, LLS, OTB, PS	35.0
Falkland	16	trawl	75.5
Japan	9	-	51.9
Russia	9	-	100.9
Belize	4	trawl	70.9
Netherlands	3	trawl	132.3

Other fleets – all vessels



Vessel type	Nº vessels
Cargo	6928
Tanker	2936
Sailing Vessel	286
Other	256
Pleasure Craft	200
Tug	151
Passenger	121

Problems encountered

- *VMS, logbooks, landings data available for portuguese fishing vessels only*
- *Mismatch between time scales of VMS, e-logbooks, landing declarations*
- *E-logbooks manually filled-in (reliability of information)*

Future Developments

- *Increase knowledge on **fishing operations** and fishing gear structure - **observer data** collected during the fishing activity*
- *Increase accuracy in fishing **effort estimation** for target and by-catch species*

Main challenge

To implement effective control and monitoring schemes !



biometore

Thank You

